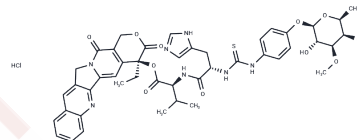


Afeletecan HCl

Chemical Properties

CAS No. :	215604-74-3
Formula:	C45H50ClN7O11S
Molecular Weight:	932.44
Appearance:	no data available
Storage:	Powder: -20°C for 3 years In solvent: -80°C for 1 year



Biological Description

Description	Afeletecan, also known as BAY 56-3722, is a water-soluble camptothecin derivative conjugated to a carbohydrate moiety exhibiting antineoplastic activity. BAY 56-3722 stabilizes the topoisomerase I-DNA covalent complex and forms an enzyme-drug-DNA ternary complex. As a consequence of the formation of this complex, both the initial cleavage reaction and religation steps are inhibited and subsequent collision of the replication fork with the cleaved strand of DNA results in inhibition of DNA replication, double strand DNA breakage and triggering of apoptosis. The peptide carbohydrate moiety of this agent stabilizes the lactone form of camptothecin in blood.
Targets(IC50)	Others

Preparing Stock Solutions

	1mg	5mg	10mg
1 mM	1.0725 mL	5.3623 mL	10.7246 mL
5 mM	0.2145 mL	1.0725 mL	2.1449 mL
10 mM	0.1072 mL	0.5362 mL	1.0725 mL
50 mM	0.0214 mL	0.1072 mL	0.2145 mL

Please select the appropriate solvent to prepare the stock solution, according to the solubility of the product in different solvents. Please use it as soon as possible.

Inhibitor · Natural Compounds · Compound Libraries · Recombinant Proteins

This product is for Research Use Only · Not for Human or Veterinary or Therapeutic Use

Tel:781-999-4286 E_mail:info@targetmol.com Address:36 Washington Street,Wellesley Hills,MA 02481